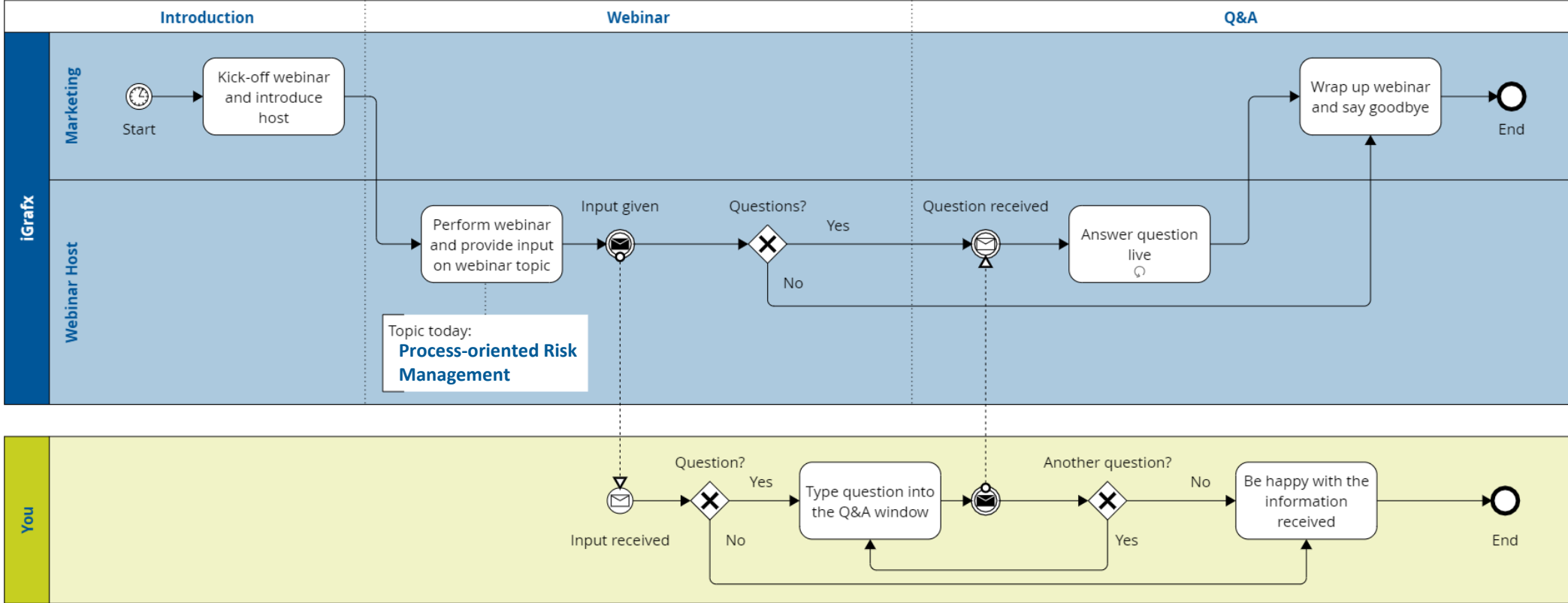


Process-oriented Risk Management

- Design of a human workflow for risk identification and treatment of measures
- Automatic determination of risk values
- Possibility of linking risks with business processes
- Comprehensive evaluations and analysis options for the identification of optimization potentials

Welcome to our webinar!



Host

Organisation



Kathrin Brunner
Pre-Sales Consultant EMEA



Irina Khaliullina
Marketing Manager EMEA

iGrafx by the numbers

1991
Foundation

3 Locations
Portland, Austin,
München

\$1B+
Saved & earned by
our customers

5 of the 10
Largest
U.S. banks

400 years
Collective BPM
experience

80
active countries

10.000+
Customers

1B+
Diagrams created
using iGrafx tools



Use of the term
"Swimlanes"



Use of the term
"What-if-analysis"



Windows Process
Diagramming

1

Focus: Process-
Oriented business
modelling



The most frequent questions of our customers

How can I control the operational risk?

How can I avoid costs for rule violations?

How do I optimize or automate the right things?

How do I implement the CEO's strategy?

How can I ensure that we focus on the most important customer contacts?

How do changes affect my business?

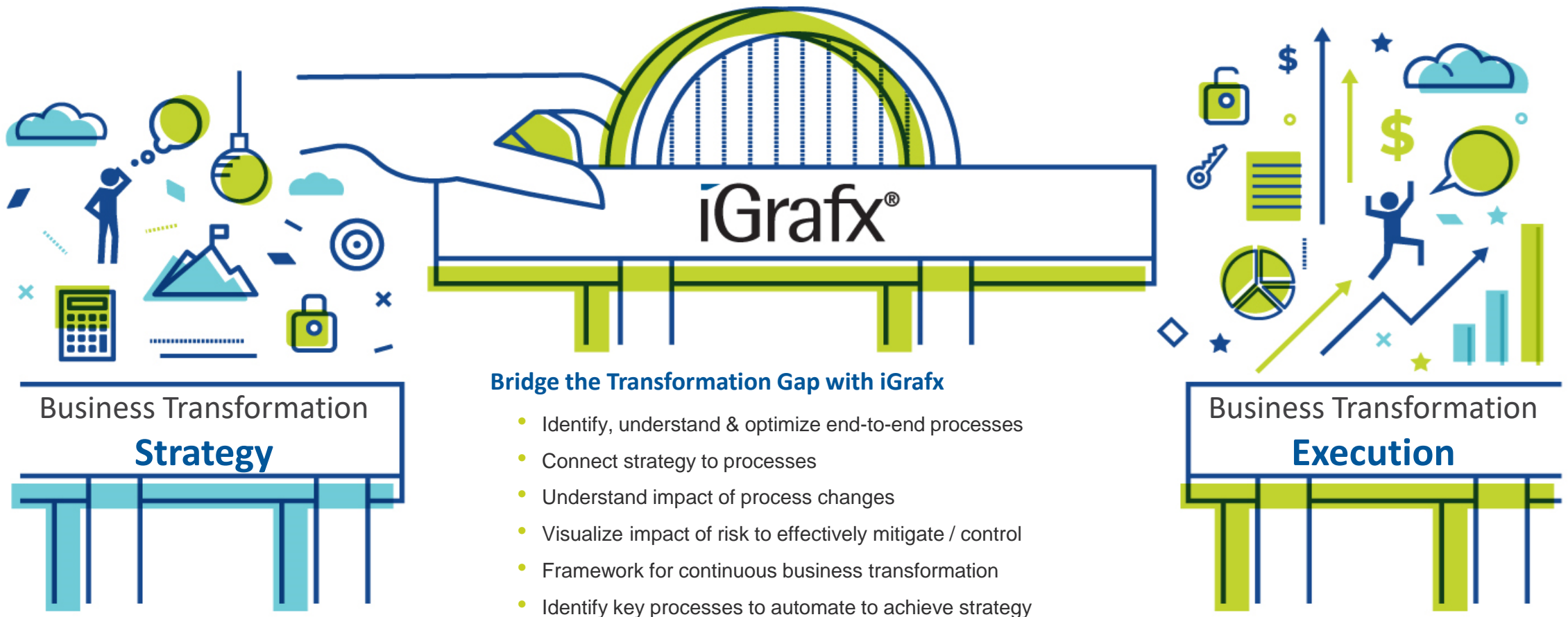


How do I get the operational data I need for important decisions?

How can I create synergies between individual business functions?

How iGrafX Enables Business Transformation

Without a process-first execution plan, business transformation is destined for failure. Strategic initiatives must be aligned with required process change



Comprehensive Business Transformation Platform



Platform Overview

Comprehensive Business Transformation Platform – Comprehensive business process capabilities such as transformation, optimization, and integrating risks with operational processes for compliance, reporting, auditing, etc.

Best-in-Class, Enterprise Scale technology – Supporting ~260⁽¹⁾ enterprise customers across both flexible Cloud and complex IT environments enabling 100K+ user communities, with seamless integrations to existing ERP, Risk, Automation, and HR Tools / Platforms.

Ease of Ownership – Flexible licensing which delivers the right capabilities to the right users at the right time.

Ease of Deployment – Flexible cloud deployment options (regional, on-premises, or hybrid) to meet any unique customer requirement.

Broad Business Transformation Applicability

OPERATIONAL

- Operational Excellence
- Quality Management

BUSINESS MODEL

- Governance, Risk & Compliance, Privacy / Data Protection
- Performance Management

STRATEGIC

- Digital Transformation
- Customer Experience

Industry Served

- Aerospace & Defense
- Bio / Pharma
- Business Services
- Energy / Oil & Gas
- Financial Services
- Government
- Healthcare / Insurance
- IT / Software
- Manufacturing
- Transportation & Logistics

Risk Management Process



1

Identification

- Risk identification, classification and description
- Carrying out an initial assessment

2

Analysis

- Aggregation to total risk
- Derivation of a risk matrix

3

Control system

- Definition of control measures for risk reduction
- Risk Communication

4

Reporting

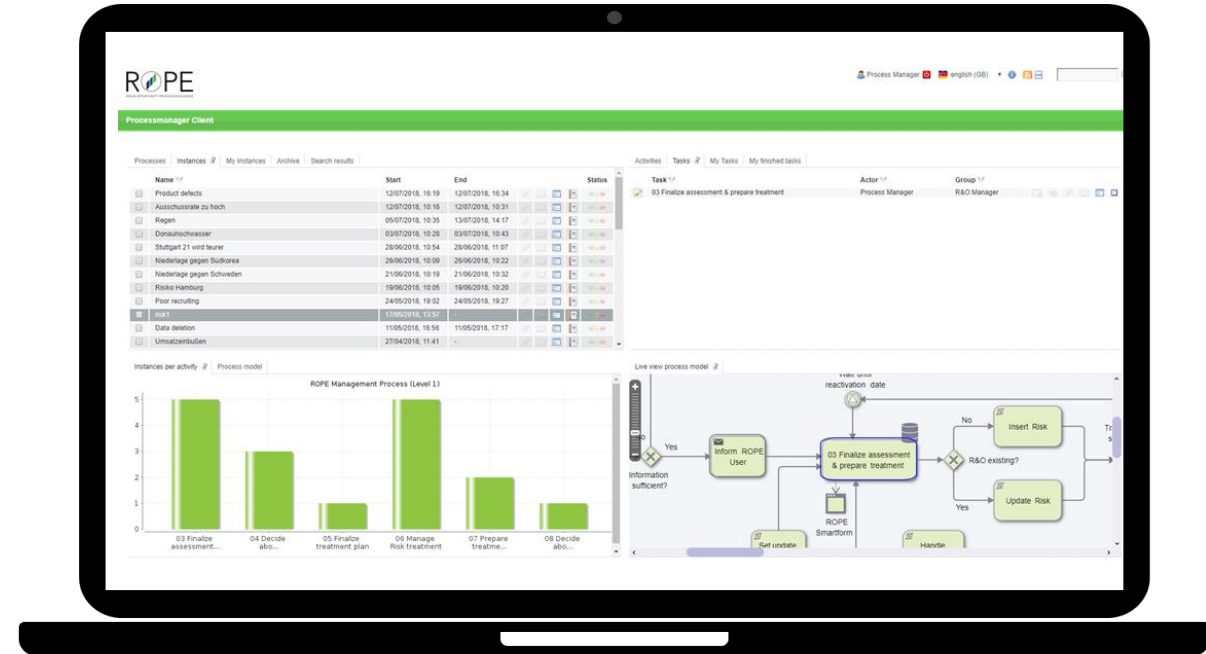
- Evaluate implementation quality
- Ensure risk transparency

Operative Risk Assessment with Treatments

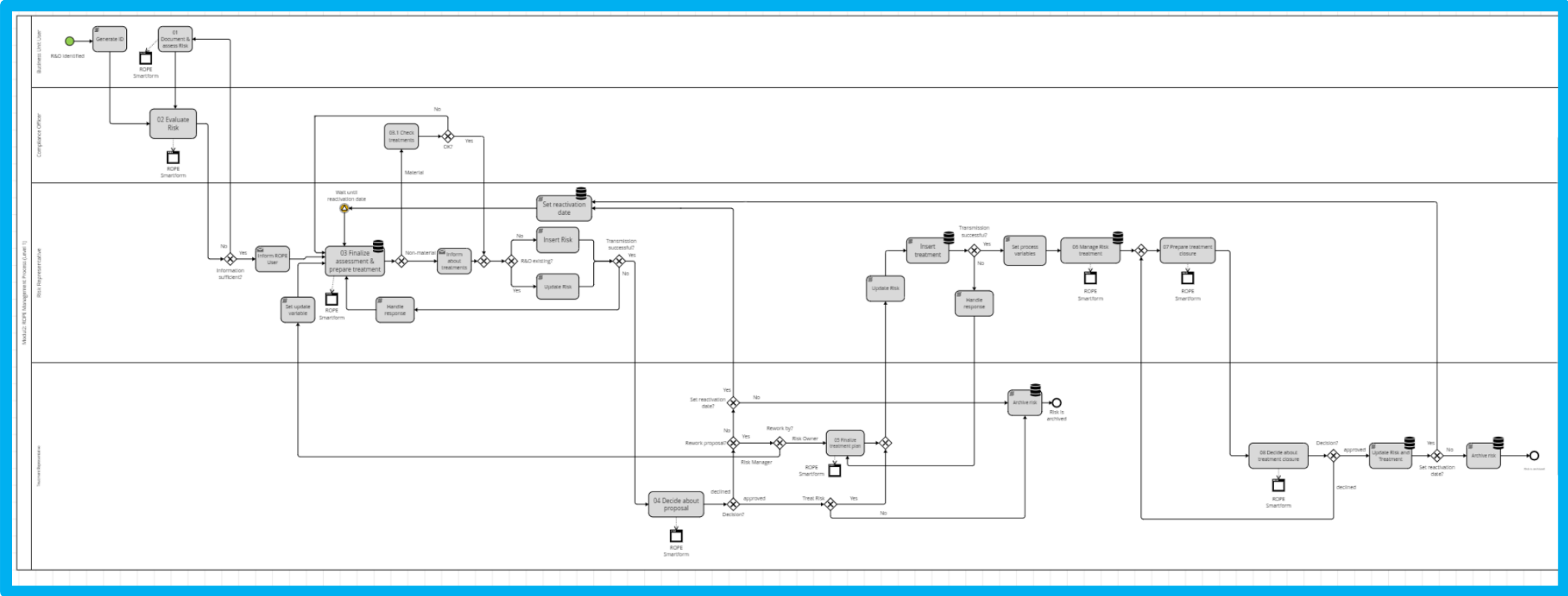


Highlights

- Assignment of risks and controls in the context of processes
- Possibility to assign risks also to other enterprise objects (e.g. strategies)
- Creation of extensive gap reports and specific evaluation of risk and control instances within the process structure
- Usage of risk and control catalogues for audit reports
- Comprehensive reporting and display of a risk matrix
- Workflow-based approach to run a risk management process and to track actions based on the risk is possible



Process Modelling of Risk Assessment

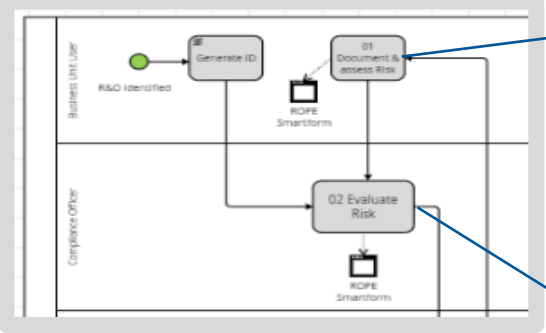


(BPMN 2.0)

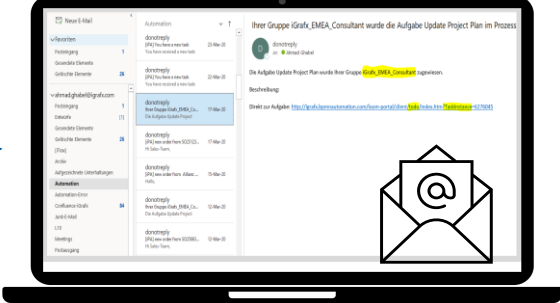
Automation Workflow Engine Overview



Process model Basis

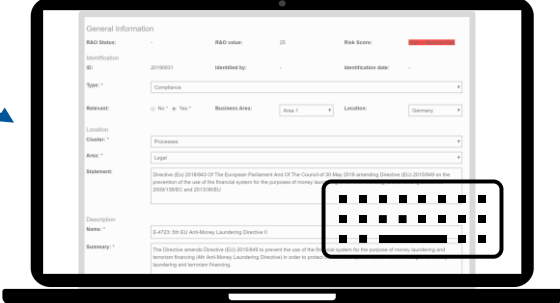


Automatic notification



Workflow Handling

Smartforms

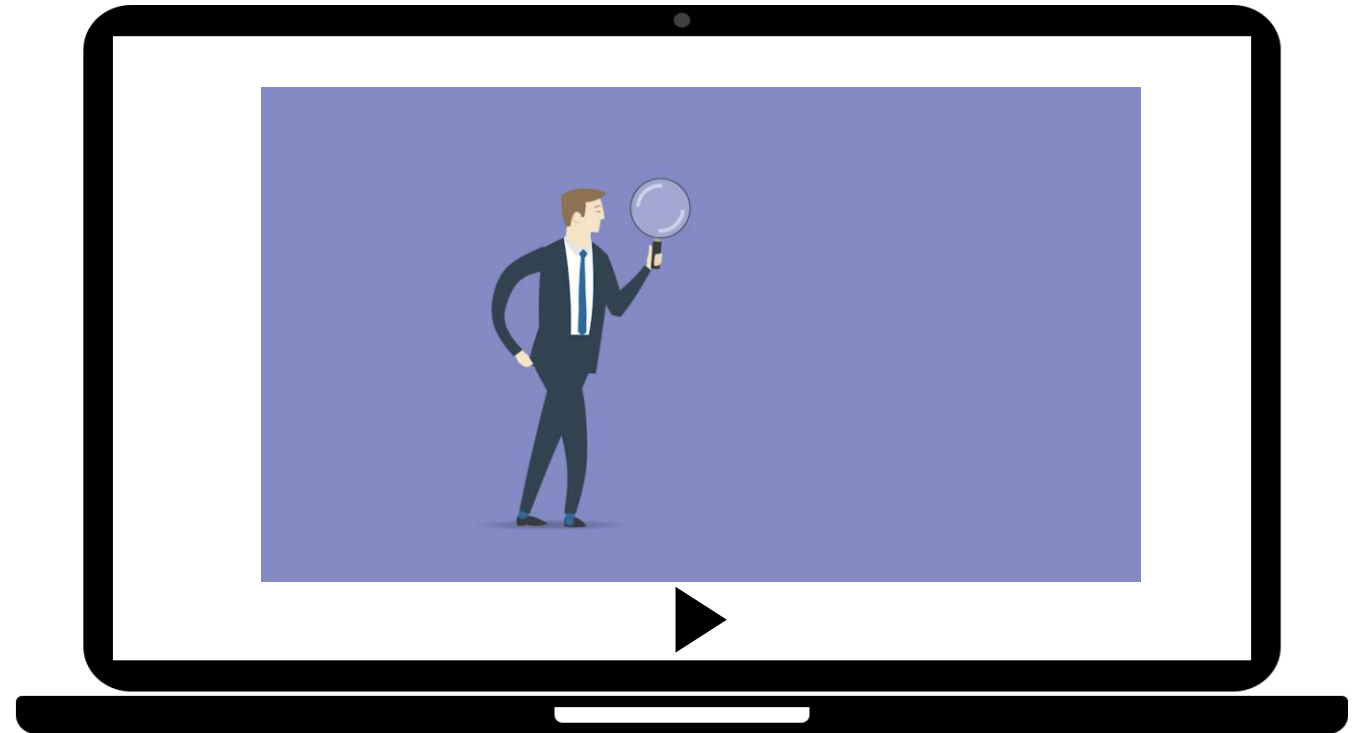


Human Workflow Automation



Highlights

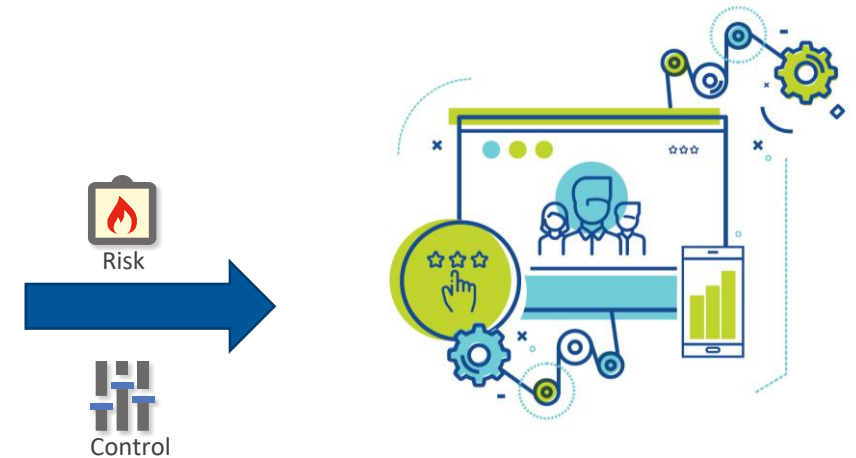
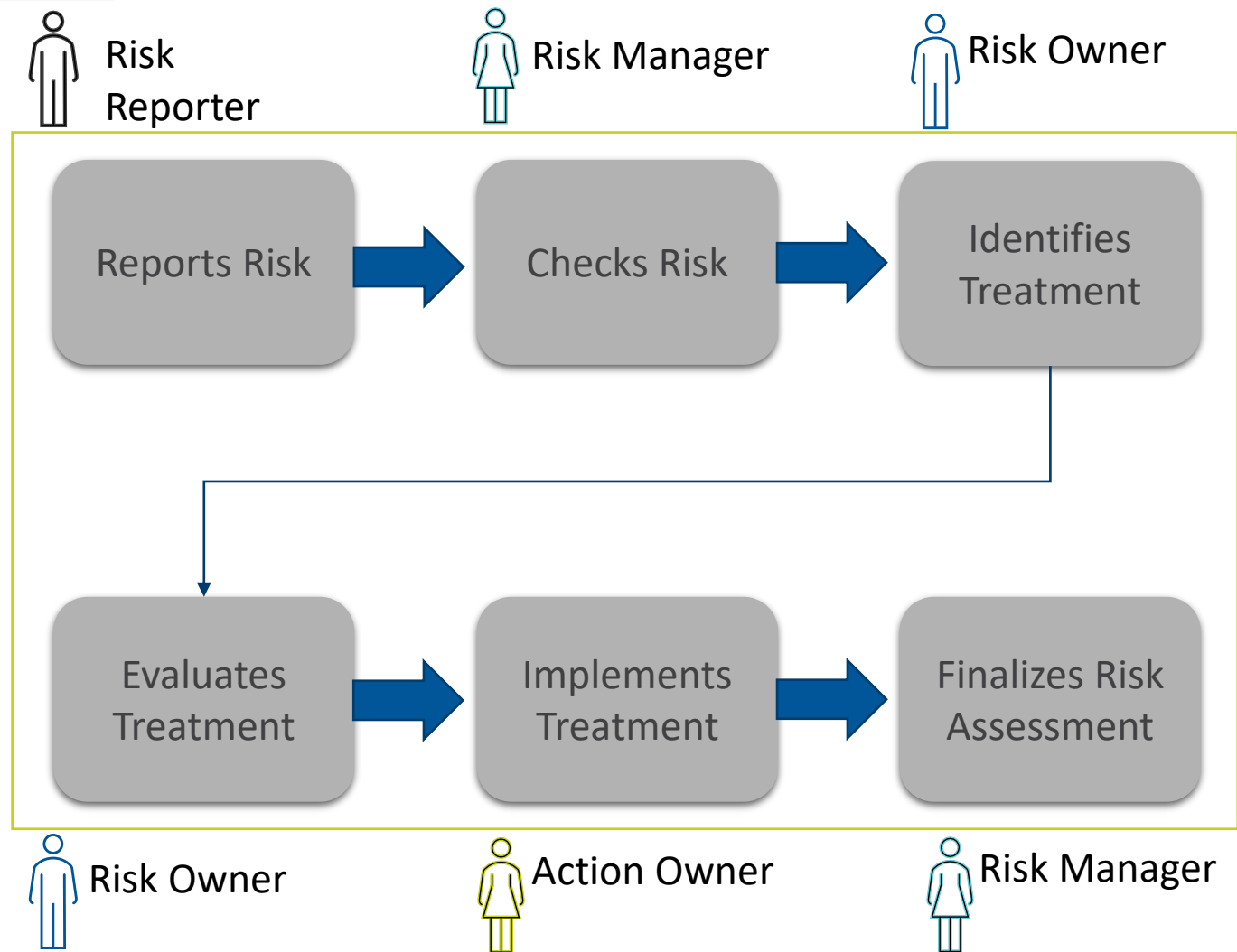
- Execution of BPMN 2.0 models via “plug & play” into the iGrafx Automation Engine
- Traceability of running instances and audit-proof reporting about finished tasks
- Team-independent automation possibilities
- Intuitive user interface with step-by-step instructions to assure entry of all relevant data by means of mandatory fields
- Integration of different systems possible (also via interfaces)



Automation Groups



Basic Workflow – simplified display



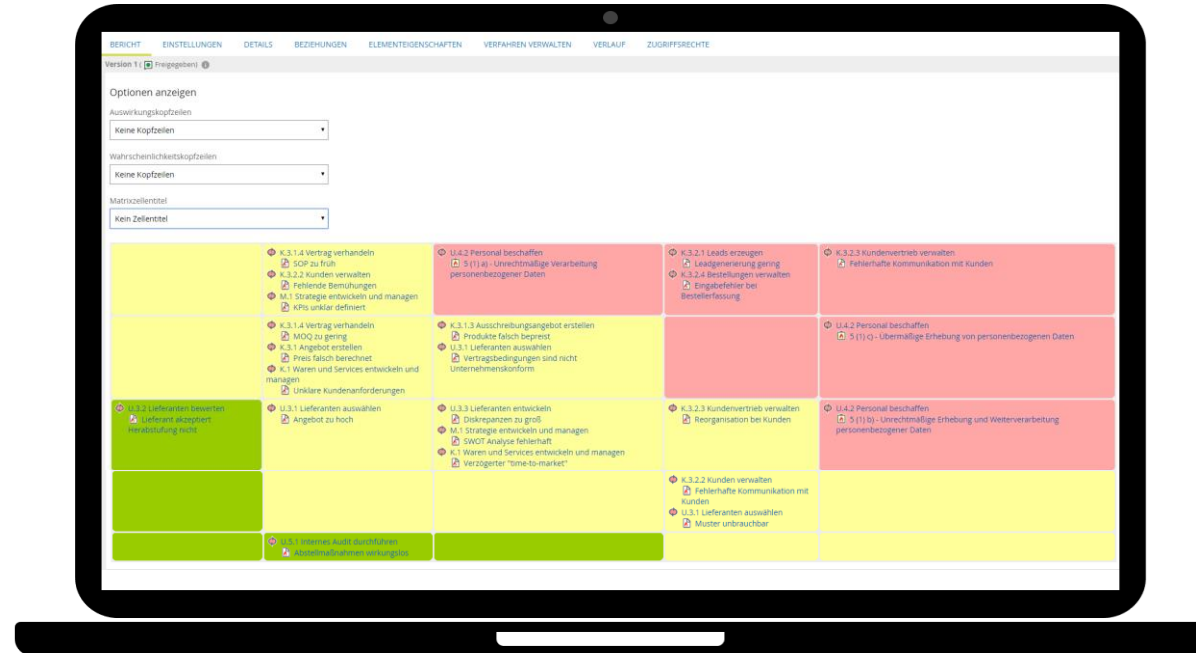
- Risk catalogue and control catalogue adjustment
- Risk transparency for sustainable and long-term risk management
- Derivation of a risk matrix and further reports

Risk Management with iGrafx



Highlights

- Assignment of risks and controls in the context of processes
- Possibility to assign risks also to other enterprise objects (e.g. strategies)
- Creation of extensive gap reports and specific evaluation of risk and control instances within the process structure
- Usage of risk and control catalogues for audit reports
- Comprehensive reporting and display of a risk matrix
- Workflow-based approach to run a risk management process and to track actions based on the risk is possible



Diamond Solution



Highlights

- Complete package from risk screening and automatic risk recording to sustainable risk management with reporting
- **Upstream monitoring of regulations - live tracking of legislative changes**
- Sector-specific monitoring
- Global screening - selection of relevant countries adjustable
- Support in the legal **evaluation** of legislative changes
- **Automatic transfer** to the risk assessment process at the push of a button

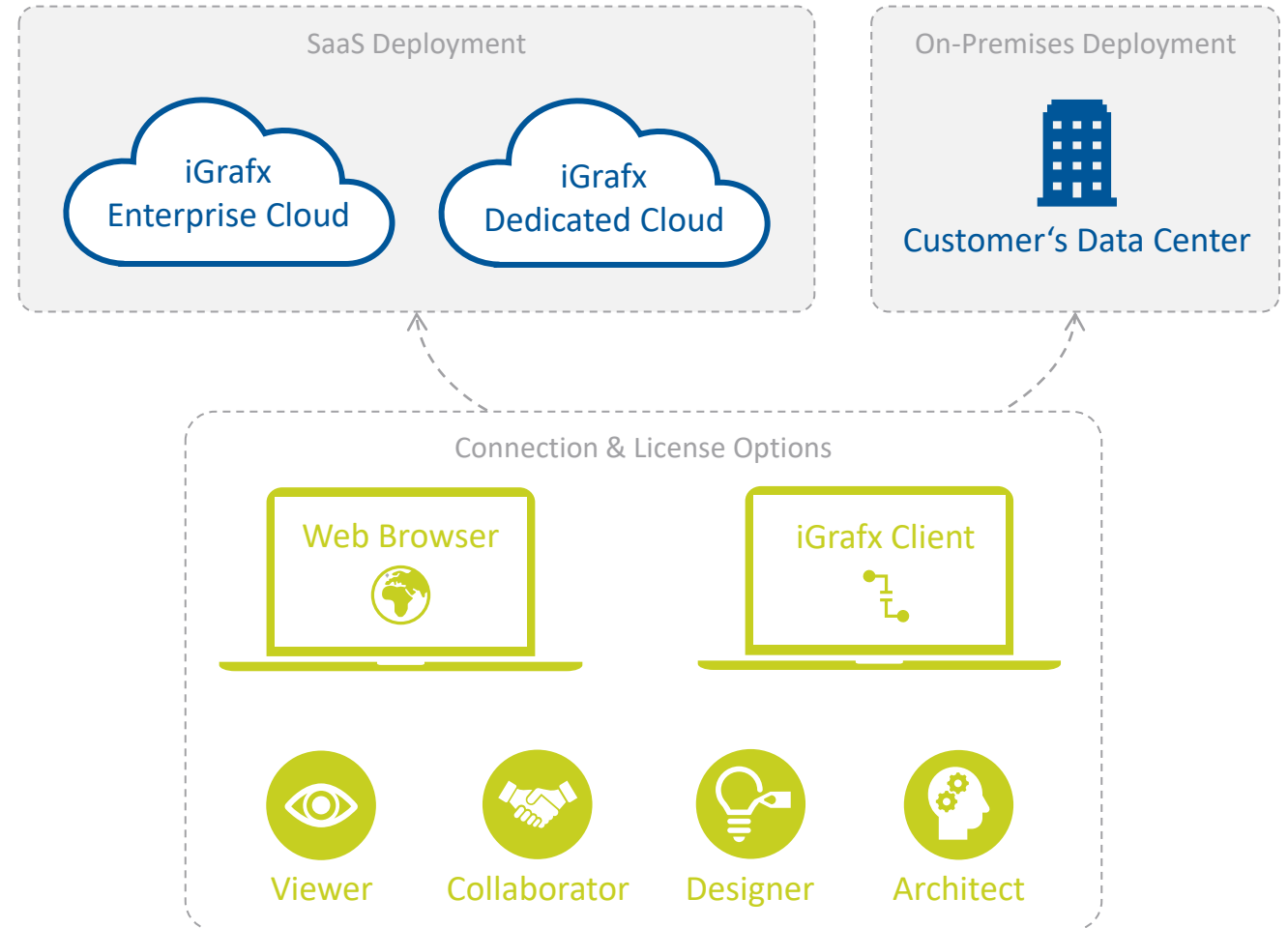


iGrafX Deployment options



Highlights

- **Security:** cloud-based data centres in your geographical region, supervised by experts.
- **Accessibility & simplicity:** world-wide access to centralised process data in your iGrafX BPM software via a web browser.
- **Cost savings:** payment concept based on usage – if at all – with minimal IT investment.
- **Scalability:** Cloud Computing with iGrafX allows you to save investment in a physical infrastructure. As your company grows, the BPM software flexibly adjusts.



What our Customers Say

With iGrafx as our core process management, we are able to deliver pragmatic value-added solutions to our customers.

-Jurgen Weiz, Head of Process Management, Munich Airport

The global rollout worked well, not just because the tools are simple to use but also because iGrafx always gave us real time support despite the time differences

- Jürgen Richthammer, Head of SAP, Grammer AG

iGrafx was an excellent choice for our process improvement initiatives. It was cost-effective, very graphical and visual, and integrated with other systems.

- John Cox, Director of Training, Parkland Hospital

We consolidated the activities of about a dozen people into one person with a backup. Essentially, we can accommodate new part requests in about 15 minutes.

- Tom Hillison – Manager, Business Process Management, Sloan Valve



Without the features provided by iGrafx, managing processing and documents would be an exorbitant effort

- Philip Feger, Process Manager – Progress-Werk Oberkirch AG

iGrafx allows us to easily connect and synchronize information between Customer Experience and process

- Kelly Sewczwicz, Sr. Technical Project Manager, COX Communications

All these different systems have now been combined into a single, comprehensive business information network—

- John Wilhelm, Process Manager, ABB

iGrafx was selected because it supports implementation best practices that allow us to deliver superior ERP systems and services that fully address customer requirements.

- Jörg Tischler, Delivery Manager, HP

We were looking for a tool that was simple to use, but powerful enough to initially map between 50 and 60 headline processes to level three, that we could drill down into and find out where improvements could be made—that's exactly what iGrafx gave us.



Please enter your questions
into the Q&A window



Event



iGrafx®
INNOVATE
20/20 Foresight
The Future of Transformation
May 4th - 8th, 2020 | Virtual Event
<https://www.igrafxinnovate.com/>





Contact details



iGrafx GmbH
Dr.-Johann-Heitzer-Str. 2
85757 Karlsfeld



+49 8131 3175 0



info.de@igrafx.com



www.igrafx.com

iGrafix®